

brother[®]
at your side

HL-5240 HL-5250DN Mono Laser Printer

Brother | HL-5240/5250DN



HL-5240

— 28 page per minute laser printer

HL-5250DN

— 28 page per minute laser printer
with built in duplex and network

up to
28
ppm

Up to 28ppm
Print Speed



Windows™
Compatible



Mac™
Compatible



DOS™
Compatible



Linux™
Compatible



High Speed USB 2.0
/ Parallel

up to
800
pages

Paper Capacity
Up to 800 pages
with optional trays



24 hour 7 day
Online Help



Optional
Paper trays
& Memory

Combining high performance features and value for money, these printers are built for business.

With built-in network and automatic duplex (HL-5250DN) as standard, these compact laser printers are the perfect high definition printer for a wide range of computing environments



HL-5200 Series
Easy access front loading consumables



Optional 2 x 250 sheet paper trays
Improved printing versatility



3 colour LED
A 3 colour LED gives instant status recognition



Key features include:

HL-5240

- 28ppm print speed
- HQ 1200dpi print resolution
- 16MB Standard memory (Expandable to 528MB)
- Up to 250 sheet* paper capacity
- Up to 50 sheet* Multi-Purpose Tray
- High speed USB2.0 and parallel as standard
- PCL6, BR-Script3, IBM Proprinter XL, Epson FX-850
- Long life consumables

HL-5250DN

Same as above plus:

- 32MB Standard memory (Expandable to 544MB)
- Duplex printing standard
- Network ready

Speed and performance

The HL-5240 and HL-5250DN have been designed to meet the printing demands of your corporate office. The high speed output of

28ppm is impressive by any standards and consistently provides outstanding performance. Thanks to a separate toner cartridge and drum, you can also be confident of lower running costs, without compromising on quality.

Memory that is fully upgradeable

The HL-5240 offers 16MB as standard and the HL-5250DN offers 32MB as standard. Such flexibility allows you to choose the printer most suited to your workload and therefore prevent bottlenecks when print demand is high. It also means that the network is free to concentrate on other tasks.

With a memory capacity that is fully upgradeable to 528MB for the HL-5240 and 544MB for the HL-5250DN, any workgroup will now be able to comfortably cope with changing circumstances and demands without having to constantly replace their printers.

Compatibility

In the modern office, workgroups increasingly require a cross-platform printer. The HL-5240 and HL-5250DN have been designed to be compatible across multiple platforms such as Windows®, Macintosh®, Linux, Unix, SAP and DOS. Brother provides as standard both Hi-Speed USB 2.0, Parallel and Ethernet ports, enabling you to use your current systems without the need to upgrade. A 3 colour LED gives instant status recognition to avoid unnecessary printing delays.

Paper capacity to handle every requirement

Coping with increasing printing requirements from your workgroup is easy. The HL-5240 and HL-5250DN come with a 50 sheet multi-purpose tray and 250 sheet paper tray as standard. Add one or two optional paper trays, to increase your total paper capacity to 800 sheets, allowing your workgroup to comfortably cope with any changing circumstances without needing to replace your printer.

Quality supplies to save time and money.

Right from the first print, the HL-5240 and HL-5250DN offer exceptional value with no additional or hidden costs. Instead of providing starter cartridges that will run out at around 1,500 pages, this range arrives with a standard yield toner (up to 3,500 pages) and a separate drum unit that only needs replacing once it has produced up to 25,000 pages. The clear advantage of this is that the cost of printing a page is kept low.

Further savings and greater efficiency can be achieved with an optional high yield toner that can print up to 7,000 pages. It is always worth remembering that genuine Brother supplies will enhance the performance of the printers and that the HL-5240 and HL-5250DN printers are backed by a comprehensive 24/7 online support through <http://solutions.brother.com>

Network Connectivity

Taking network links to new levels of speed, reliability and efficiency.

It is important to consider the benefits that duplex (two sided) printing will bring to the efficiency and performance of your office. This feature, which comes as standard on the HL-5250DN, saves you money by reducing running costs and paper requirements. This printer also comes with an integrated 10/100 Base-TX network, which makes connecting your new printer to the network effortless

For the IT Administrator

Network Management

Manageability is essential in today's busy network environments so Brother provides a number of tools to help you proactively manage your network-connected printers.

An Embedded Web Server provides a platform that can be accessed from any web browser to manage your device. E-mail notification can alert administrators or users of the status of the machine, for example low consumables or empty paper tray.

In addition Brother supplies BRAdmin Professional Software for administering LAN connected devices. An Enterprise edition of this software (Web BRAdmin) can be downloaded from the Brother Solutions website (<http://solutions.brother.com/webbradmin>).

Networking your Macintosh™

The HL-5250DN supports the Bonjour Configuration protocol giving you zero configuration network connectivity in OS/X 10.2.4 or greater

Brother. Always At Your Side.

Designing and producing technology that improves your world isn't the only way Brother is helping to support your business. Brother's commitment to its customers extends well beyond the initial purchase, with an entire package of value added extras including:

Warranties

Full 24 Months return to base warranty for extra peace of mind. Includes Technical Helpline and HelpDesk

SAP Printing

Demonstrating Brother's continual commitment to this global printing solution

Barcode printing

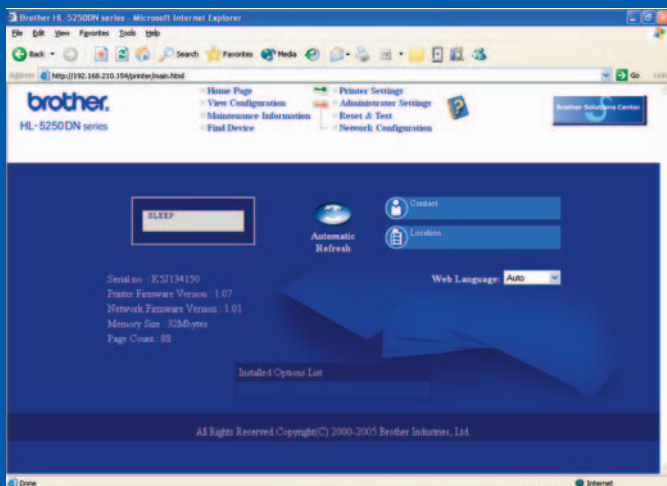
Most useful application for documents which require stringent monitoring and referencing

Email notification (HL-5250DN)

The printer will inform individuals or groups of network users of any day to day problems

BRAdmin Professional Software (HL-5250DN)

A tool for the efficient management of LAN connected printers



Embedded Web Server Support

Easy management of your printer via the web.



Duplex Function (HL-5250DN)

Duplex comes built-in as standard with the HL-5250DN, therefore saving you time and allowing you to print duplex documents immediately.

Whether your intentions are to produce professional documents or reduce paper usage, and therefore reduce costs, the HL-5250DN enable you to automatically print to both sides of the paper. Simply select the option in the printer driver and the machine will do the rest.

Booklet Printing

Booklet printing becomes a simple and easy way to create a more professional range of documents for both internal and external presentations. Furthermore, this feature saves on paper costs, as a 32 sheet A4 document can be reduced to an A5 booklet comprising of 8 A4 sheets.

Control Code Search and Replace

In some customer environments the PCL commands sent to the printer do not match the printer's PCL language support. To solve this problem, often we need to change our firmware to match the customer's environment. With Control Code Search and Replace we no longer need to develop any special firmware, we just send the program to Search & Replace within the printer.

IPv6 (Internet Protocol Version 6) (HL-5250DN)

The HL-5250DN will be the first Brother printer to support IPv6, the next generation Internet Protocol. IPv6 replaces the aging IPV4. IPv6 is the solution to provide the real Internet and ubiquitous environment. To support current office network environments, HL-5240DN will support both IPv4 and IPv6.

IPv6 improvements and benefits – offers easy auto configuration and enhanced security





Technical Specification

ENGINE

Technology	Electrophotographic
Print Speed	Up to 28 ppm
First Print Time	Duplex Printing Up to 9 ppm (HL-5250DN) Less than 8.5 sec
Resolution	Windows 95 / 98 / Me and NT4.0 / 2000 / XP Mac OS 9.1 - 9.2 OSX 10.2.4 or greater DOS Linux

CONTROLLER

Processor	266MHz
Memory	Standard Optional
Interface	Standard
Network Interface	Standard 10/100 BaseTX (HL-5250DN)
Network Connectivity	Protocol (HL-5250DN) Protocol (HL-5250DN)
Management tool	BRAdmin Professional Web BRAdmin Web Based Management BRAdmin light
Emulation	PCL [®] 6, BR-Script 3 (PostScript [®] 3 language emulation), IBM [®] Proprietary XL, Epson [®] FX-850
Resident Fonts	PCL [®] , 66 scalable fonts, 12 bitmap fonts, 11 bar codes BR-Script 3: 66 scalable fonts

SOFTWARE

Printer Driver	For Windows[®] For Macintosh[®] Linux[®]	PCL [®] Driver for 95 / 98 / Me, and NT [®] 4.0 / 2000 / 2003 SRVR / XP BR-Script 3 (PPD file for 95 / 98 / Me, NT4.0 / 2000 / 2003 SRVR / XP) Brother Driver for Mac OS [®] 9.1 - 9.2, Mac [®] OS X 10.2.4 or greater BR-Script 3 (PPD file for Mac [®] 9.1 - 9.2, OS X 10.2.4 or greater) Brother GDI driver and BR-Script 3 (PPD file)
Utilities		Interactive Help, Driver Deployment Wizard (Only HL-5250DN)

CONTROL PANEL

Display	LED	3-colour LED to show the status of toner, drum and paper
Button	2 buttons	Go and Job Cancel

PAPER HANDLING

Paper Input	Multi-Purpose Tray Paper Tray 1 (Standard) Paper Tray 2 (Optional) Paper Tray 3 (Optional)	Up to 50 Sheets** Up to 250 Sheets** can be stored Up to 250 Sheets** can be stored (LT-5300) Up to 250 Sheets** can be stored (LT-5300)
Paper Output	Face Down	Up to 150 Sheets**
Duplex		Manual two-sided prints (HL-5240) Automatic two-sided prints (HL-5250DN)

MEDIA SPECIFICATIONS

Media Types	Multi-Purpose Tray	Plain Paper, Bond Paper, Recycled Paper, Envelopes, Labels, and Transparencies
Media Weights	Paper Tray 1, 2 & 3 Multi-Purpose Tray Paper Tray 1, 2 & 3	Plain Paper, Bond Paper, Recycled Paper, Transparencies 60 - 161 gsm 60 - 105 gsm
Media Sizes	Multi-Purpose Tray Paper Tray 1, 2 & 3	Width 69.9 to 215.9 mm, Length 116 to 406.4 mm A4, Letter, B5(ISO), A5, B6(ISO), A6, Exe (Optional paper tray LT-5300 does not accept A6)

PRINTER DRIVER FUNCTIONS*

Page Layout	N-up Printing Poster Printing Watermark Printing Macro Printing	Condense 2, 4, 9, 16 or 25 pages into 1 A4 page Enlarge 1 page to print over in 4, 9, 16 or 25 A4 pages This feature can be used to watermark your documents with predefined text or with your own user defined messages You can save time and increase printing speed for often used information such as forms, company logos, letter head formats or invoices by saving to printer memory
Others	Secure Printing Booklet Printing Reprint Quick Print Setup Status Monitor Media Fix Search & Replace	This feature can can safeguard information throughout the entire printing process, tracking documents from the moment the print button is pressed to the arrival of a document in the right hands Print a document into a booklet using duplex print and arranging the document according to the page number If you have data which you regularly reprint, the print data can be stored in memory and then reprinted whenever you need it. A printer driver function that enables you to change the driver setting without opening Property dialog A function to indicate the printer error on the PC, and also shows help movies When Media Fix is applied, the driver media setting will be ignored In some customer environments the PCL commands sent to the printer do not match the printer's PCL language support. No need to develop any special firmware, just send the program to Control Code Search & Replace

SUPPLIES***

Toner	Standard Yield High Yield	(TN-3145) Up to 3,500 pages @5% coverage, continuous printing (TN-3185) Up to 7,000 pages @5% coverage, continuous printing (DR-3115) UP to 25,000 pages, @1 page per job
--------------	------------------------------	---

OPTIONS

Lower Paper Tray Memory	Up to 2 trays	Optional Up to 250 sheets** can be stored in the paper tray (LT-5300) Expandable up to 528MB (HL-5240), 544MB (HL-5250DN) using 144pin DIMM (Industry Standard)
--------------------------------	---------------	--

DIMENSION/WEIGHT

Dimensions (WxDxH)	371 x 384 x 246 mm
Weights	9.5 kg (HL-5240), 9.8 kg (HL-5250DN)

OTHERS

Power Consumption	Printing Standby Sleep	610 W or less 80 W or less 8 W or less (HL-5240), 9 W or less (HL-5250DN)
Noise Level	Sound Power Printing Standby	6.7B(A) or less 4.3B(A) or less
Ecology	Power Saving Toner Saving	Consume less energy when not in use Reduce toner usage and helps to reduce the total cost of ownership



Brother strongly recommends that our customers use Genuine Brother consumable products only. By using genuine Brother consumables the benefits to you are:

- Better quality prints
- Greater yields per consumable
- You protect your machine from damages
- Achieve optimum performance.

Failure to use only genuine Brother[®] supplies may damage the machine and such damages will not be covered under warranty.

HL-5240 / HL-5250DN Minimum System

Computing System	Operating System Version	Processor Speed	Minimum RAM	Recommended RAM	Available Hard Disk Space
Windows	95, 98, 98SE	486-66MHz	8MB	16MB	40MB
	NT [®] 4.0	Pentium 75MHz	16MB	32MB	50MB
	2000 Professional	Pentium 133MHz	64MB	128MB	50MB
	Me	Pentium 150MHz	32MB	64MB	50MB
	XP	Pentium 300MHz	128MB	128MB	50MB
Macintosh	OS 9.1 - 9.2 OSX 10.2.4	All base models meet minimum requirements	32MB 128MB	64MB 160MB	50MB 50MB

*Windows[®] Only / **At 75gsm plain paper / *** Shipped with 3,500 pages of toner

Contact:

Brother International (Aust) Pty Ltd
 Web-site: www.brother.com.au Technical Help Web-site: http://solutions.brother.com
NSW/ACT 11 Talavera Road, Macquarie Park NSW 2113 Phone: (02) 9887 4344 Fax: (02) 9870 7234
VIC 1/733 Whitehorse Rd, Mont Albert VIC 3127 Phone: (03) 9899 4844 Fax: (03) 9899 4833
QLD/NT 245 Riverside Drive, West End QLD 4101 Phone: (07) 3255 1211 Fax: (07) 3255 1911
SA/TAS Unit 4, 13 King William Rd, Unley SA 5061 Phone: (08) 8272 1300 Fax: (08) 8272 1199
WA 117 Great Eastern Highway, Belmont WA 6104 Phone: (08) 9478 1955 Fax: (08) 9277 2177

All specifications subject to change without notice